

Fritzsche Capital

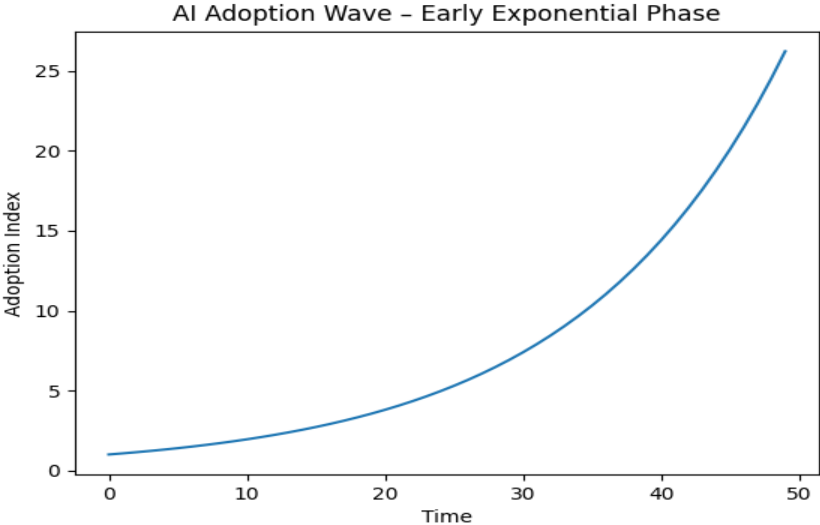
MEGA STRATEGIC DOCTRINE – PRIVATE ARCHIVE

Executive Overview

This mega-document consolidates Fritzsche Capital doctrine: capital markets modernization, blockchain settlement infrastructure, AI-driven macro waves, quantitative modeling, and frequency-based stock analysis frameworks. It serves as a private institutional reference.

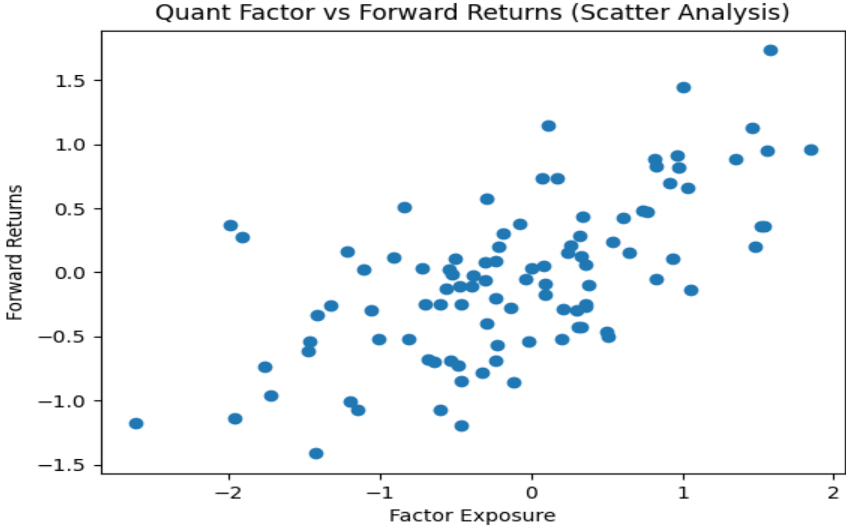
Section I – AI Wave & Exponential Systems

We are in the early exponential phase of AI adoption. Historically, technological revolutions follow nonlinear S-curve or exponential acceleration models. Capital allocation should position ahead of inflection points rather than at peak narrative saturation.



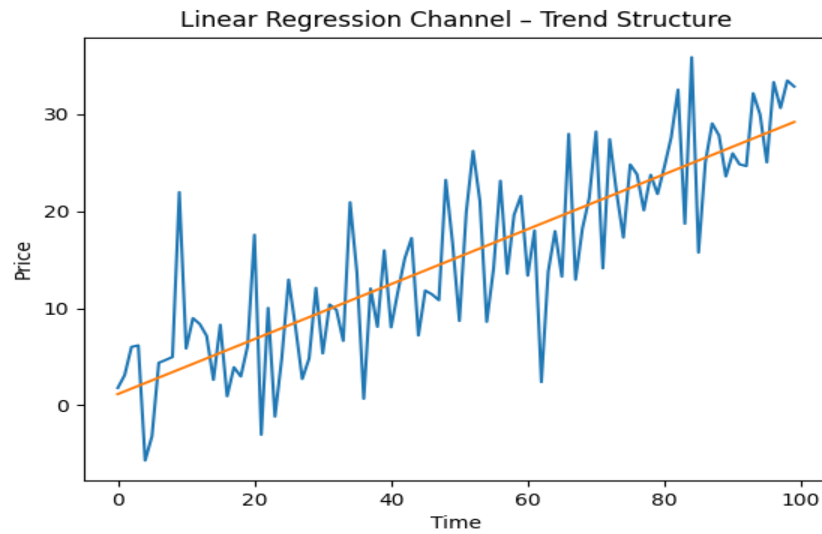
Section II – Quantitative Factor Modeling

Scatterplot analysis demonstrates relationship mapping between factor exposure and forward returns. Quantitative frameworks allow probabilistic positioning rather than emotional conviction trading.



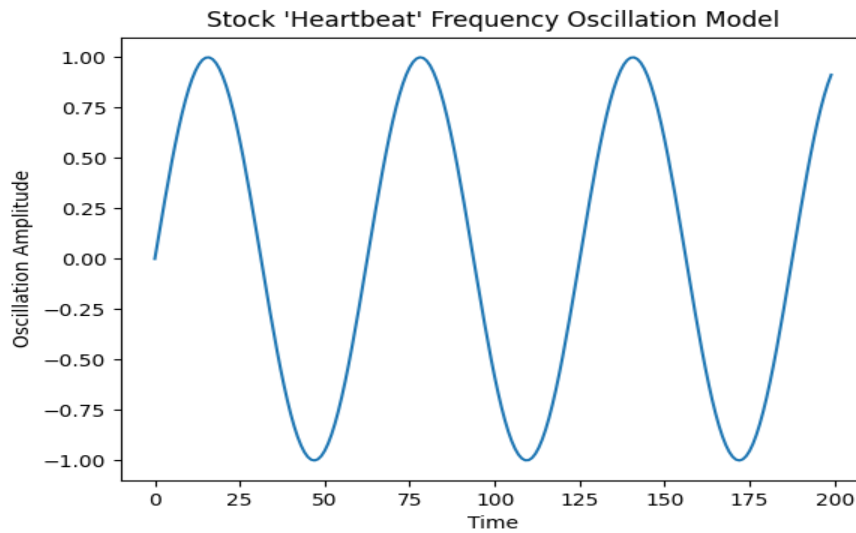
Section III – Linear Regression Channels

Linear regression channels provide structural trend identification. Deviations from trend represent volatility opportunity zones. Discipline replaces narrative-based decision-making.



Section IV – Frequency Theory & Stock Heartbeat Model

Markets exhibit oscillatory behavior analogous to wave mechanics. The 'heartbeat' model represents cyclical liquidity pulses, volatility compression-expansion cycles, and behavioral rhythm patterns. Mastery of frequency improves entry timing precision.



Integrated Strategic Architecture

Bitcoin as collateral layer. U.S. equities as productive layer. Blockchain as settlement rail. AI as macro growth wave. Quant modeling as precision engine. Frequency analysis as timing filter. This multi-layer integration defines Fritzsche Capital's structural edge.